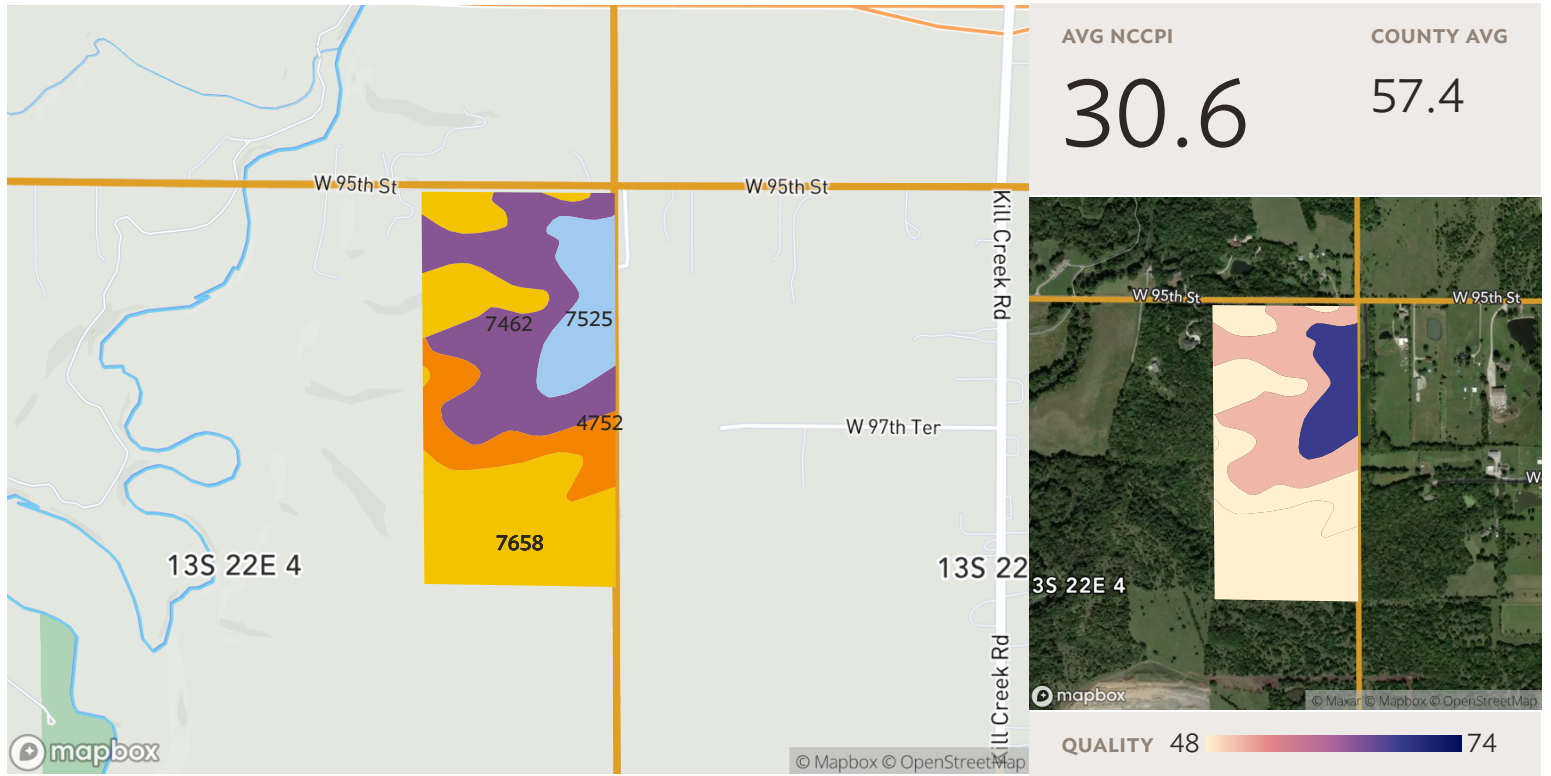


1 field, 82 acres in Johnson County, KS TOWNSHIP/SECTION 13S 22E - 3, 4



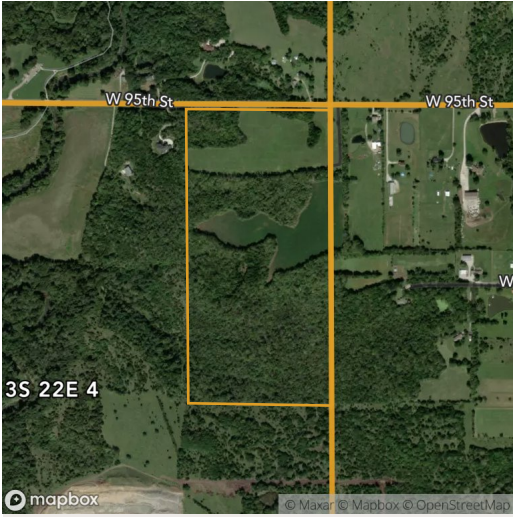
## All fields

Source: NRCS Soil Survey

82 ac.

SOIL CODE	SOIL DESCRIPTION	ACRES	PERCENTAGE OF FIELD	SOIL CLASS	NCCPI
7658	Vinland-Rock outcrop complex, 15 to 45 percent slopes	33.51	41.1%	6	4.0
7462	Oska-Martin silty clay loams, 4 to 8 percent slopes	26.78	32.8%	3	51.5
4752	Sogn-Vinland complex, 3 to 25 percent slopes	10.70	13.1%	6	25.2
7525	Chillicothe silt loam, 2 to 5 percent slopes	10.54	12.9%	2	67.7
<b>81.53</b>					<b>30.6</b>

1 field, 82 acres in Johnson County, KS TOWNSHIP/SECTION 13S 22E - 3, 4



### All fields

82 ac.



	2019	2018	2017	2016	2015
Forest	71.0%	67.9%	69.4%	68.9%	68.0%
Grass/Pasture	20.0%	22.7%	22.5%	22.0%	22.8%
Corn	3.9%	5.9%	4.8%	-	-
Winter Wheat	-	-	-	0.3%	5.1%
Other	5.0%	3.5%	3.3%	8.9%	4.1%

Source: NASS Cropland Data Layer