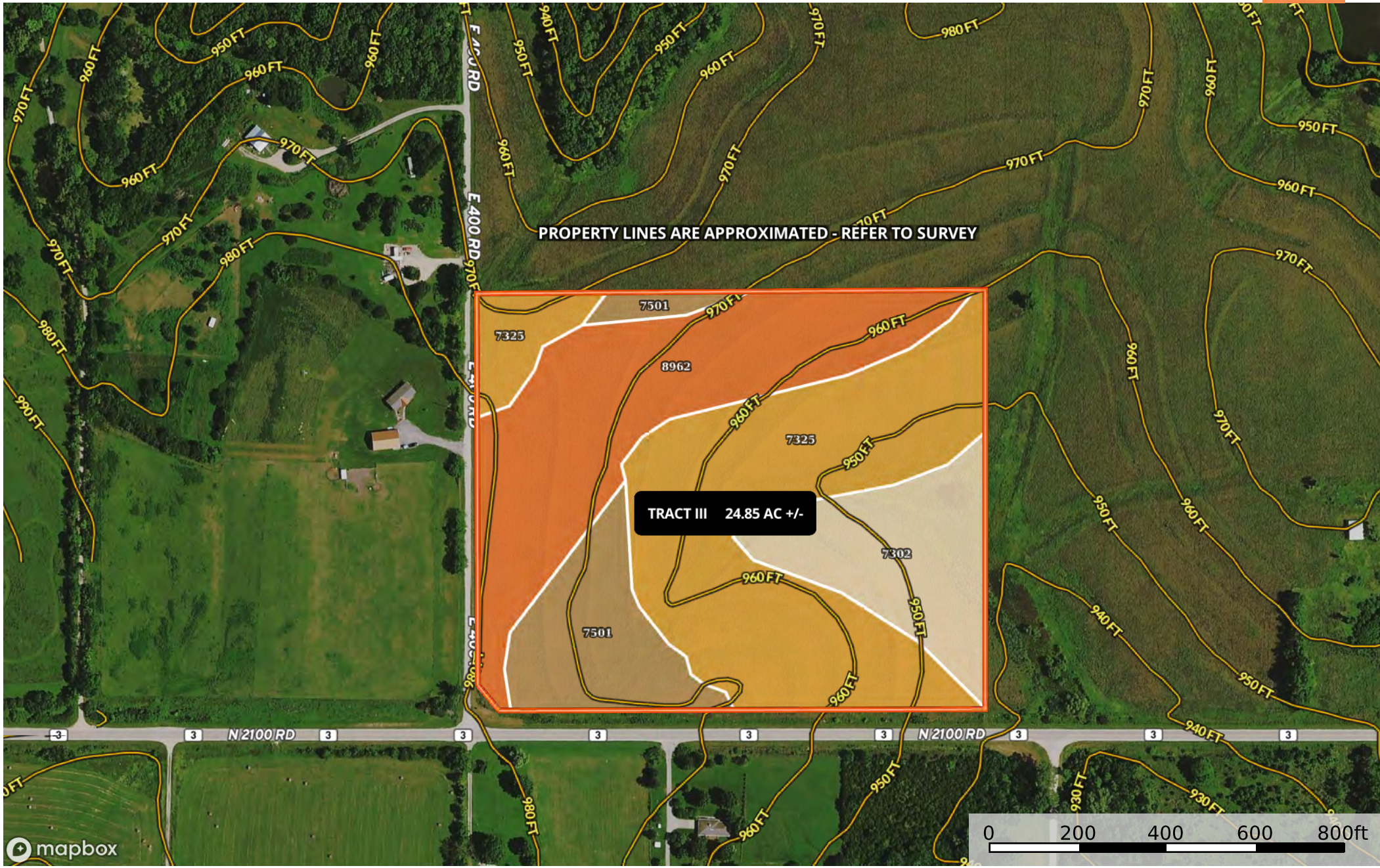


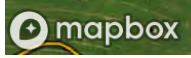
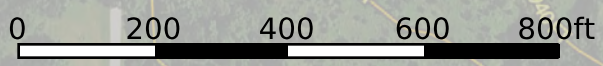
# Prairie Meadows Estates Tract III

Douglas County, Kansas, AC +/-



PROPERTY LINES ARE APPROXIMATED - REFER TO SURVEY

TRACT III 24.85 AC +/-



Boundary 2 24.75 ac

SOIL CODE	SOIL DESCRIPTION	ACRES	%	CPI	NCCPI	CAP
7325	Martin-Oska silty clay loams, 3 to 6 percent slopes	10.39	41.98	0	50	3e
8962	Woodson silt loam, 1 to 3 percent slopes	7.37	29.78	0	51	2s
7302	Martin silty clay loam, 3 to 7 percent slopes	3.73	15.07	0	51	3e
7501	Pawnee clay loam, 4 to 8 percent slopes, eroded	3.26	13.17	0	40	3e
TOTALS		24.75(*)	100%	-	49.13	2.7

(\*) Total acres may differ in the second decimal compared to the sum of each acreage soil. This is due to a round error because we only show the acres of each soil with two decimal.

